

2024

AGI
Attrezzature Grafiche Italia



30
YEARS
ANNIVERSARY
1993 | 2023

**GENERAL
CATALOGUE**



AGI EXPERIENCE

When A.G.I. S.r.l., Attrezzature Grafiche Italia, was founded in 1993 it was solely focused on the dry offset market.

The experience gained from this market, together with the determination to drive the company continuously forward through different developments, each time increasing the range of the products offered on the market, whilst still maintaining the standard of quality required.

These developments include processors for photopolymer plates for **Letterpress, Flexo-Solvent, Flexo-Water, Tower Systems** and **In-line models**.



These were followed by post-press washing systems for both photopolymer plates and sleeves.





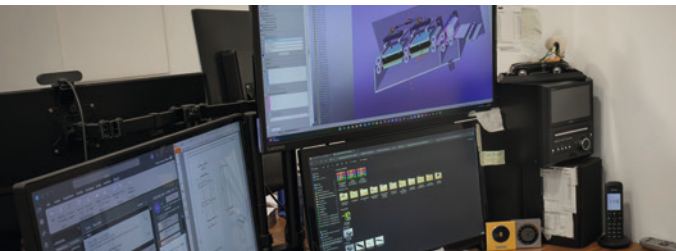
AGI PHILOSOPHY

A.G.I. S.r.l. internally design all their equipment and are also involved in each step of production due to their own in-house fabrication and paint company.

This ensures that AGI is a global company able to guarantee the maximum quality and efficiency of their products. This can be proven by the countless endorsements both in the Italian and International market.

All AGI products conform to the exacting current regulations of CE, UKCA and UL certification.

DESIGN DEPARTMENT



ASSEMBLY DEPARTMENT



LASER CUTTING AND CARPENTRY



ELECTRICAL AND ELECTRONIC ASSEMBLY



PLASTIC MATERIALS PROCESSING



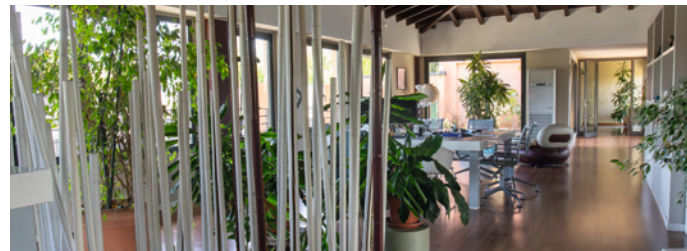
AUTOMATIC WAREHOUSE



POWDER COATING



MANAGEMENT



INDEX

FLEXO SOLVENT

- Tower Processors
- Inline Processors
- EDF Flexo Solvent

LETTERPRESS

- Tower Processors
- Inline Processors
- Table Top

FLEXO WATER

- Tower Processors
- Inline Processors
- Combi 25/30 FLW
- Polymer 25/30 FLW
- Filters

WASHING SYSTEM

- Cleaning
- Cleaning 4.0
- Sleeve Cleaner Direct Engraving
- Sleeve Cleaner

EXPOSERS

- EDF Letterpress
- EDF Flexo Solvent
- EDF Flexo Water
- EDF LED
- Table Top
- UVA-UVC

FLEXO SOLVENT

COMBINATION PROCESSORS

POLYMER FLEXO SOLVENT



MAIN FEATURES

Combination processor for flexo solvent plates.

- Independent processing sections
- Compatible with analogue and digital plates
- Washout of the whole plate surface through an orbital movement of the plate holder
- Easy manual brush segment setting
- Main exposure and finishing sections equipped with LEDs indicating the status of each lamp
- Intuitive user-friendly HMI touch screen controlling all the steps of the process
- Temperature control of the wash out solution and dryer
- Fumes exhaust
- Remote connection possibility

Optional

- Sticky plate



TECHNICAL DATA

A3	A2	A1	A1 PLUS	MODEL
370x520 mm 14"x20"	520x760 mm 20"x30"	710x890 mm 27"x35"	790x1030 mm 31"x40"	Max. Plate Dimensions
75x105x128	108x110x128	145x126x128	145x135x128	Dimension WxDxH cm
200	290	520	540	Weight kg
400V 50/60Hz 3PH+N+GND 230V 50/60Hz 3PH+GND 230V 50/60Hz 1PH+N+GND		400V 50/60Hz 3PH+N+GND 230V 50/60Hz 3PH+GND		Power Supply
3,7	7,7	8,4	8,5	Power kW
28	35	79	82	Tank Capacity (l)
9x40W 10R L.590 mm	12x60W 10R L.900 mm	15x60W 10R L.1200 mm	17x60W 10R L.1200 mm	Exposure UVA Lamps
-	-	14x60W 10R L.1200 mm	14x60W 10R L.1200 mm	Post-Exposure UVA Lamps
10x15W L.437 mm	12x30W L.900 mm	13x36W L.1200 mm	13x36W L.1200 mm	Exposure UVC Lamps

THE IMAGES IN THIS DOCUMENT ARE PROVIDED FOR ILLUSTRATIVE PURPOSES.
WE RESERVE THE RIGHT TO MAKE CHANGES AND IMPROVEMENTS TO ANY PRODUCT DESCRIBED HEREIN WITHOUT NOTICE.

WWW.AGIGRAPHICS.COM

IN-LINE PROCESSORS

LINEA FLEXO-SOLVENT



MAIN FEATURES

Automatic in-line processor for flexo solvent plates (chlorate and no chlorate) with thickness up to 7mm.

- Intuitive user-friendly HMI touch screen controlling all the steps of the process
- Wash out section and pre-dryer suitable for analogue and digital plates (separated digital black mask removal section included)
- Wash out carried out through a set of 5 flat orbital brushes, with automatic height/pressure adjustment, according to the plate thickness and desired relief
- Final cleaning of both sides of the plate through a set of cylindrical brushes and fresh solvent
- Pin bar transportation system
- Punching integrated in the unit
- Easy plate loading mechanism
- Fully automated temperature control (heater/chiller)
- Automated control and management system of the solvent viscosity for automatic regeneration
- Pre-dryer with control system of the plate presence
- Fume exhaust system
- Possibility to store personalized recipes for every job
- Possibility to work with external barrels or directly with distillation systems
- Possibility of remote control and working data download





TECHNICAL DATA

30/40	36/47	42/60	52/80	MODEL
780x1030 mm 30"x40"	920x1320 mm 36"x52"	1070x1530 mm 42"x60"	1320x2030 mm 52"x80"	Max. Plate Dimensions
142x366x140	156x416x140	172x416x140	199x472x140	Dimension WxDxH cm
1000	1250	1370	1500	Weight kg
230V 50/60Hz 3PH+GND 400V 50/60Hz 3PH+N+GND				Power Supply
9	9	9	10	Power kW
70+25	125+25	142+25	177+32	Tank Capacity (l)
		10		Air Consumption (l/min)
		6		Pressure (bar)

THE IMAGES IN THIS DOCUMENT ARE PROVIDED FOR ILLUSTRATIVE PURPOSES.
WE RESERVE THE RIGHT TO MAKE CHANGES AND IMPROVEMENTS TO ANY PRODUCT DESCRIBED HEREIN WITHOUT NOTICE.

WWW.AGIGRAPHICS.COM

EXPOSURE UNITS

EDF FLEXO-SOLVENT



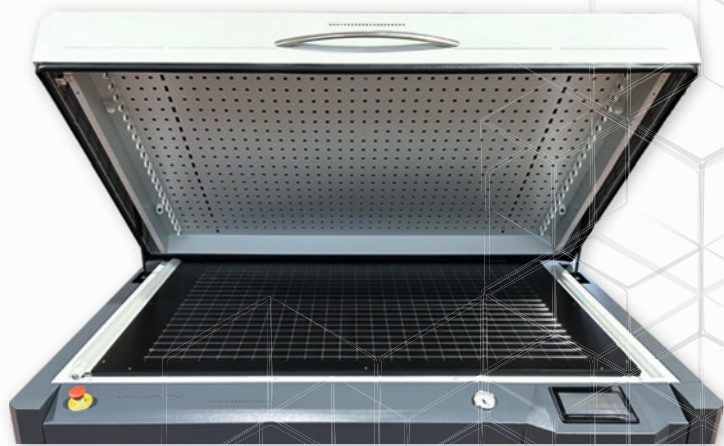
MAIN FEATURES

Combined exposure, dryer and light finishing unit

- Intuitive user-friendly HMI touch screen controlling all the steps of the process
- Main exposure equipped with light integrator and airflow system for lamps cooling
- Main exposure and finishing sections equipped with LEDs indicating the status of each lamp
- Drying section consisting of 4 drying drawers with independent timers
- Light finishing section with UVA and UVC lamps
- Dedicated exhaust system
- Remote connection possibility

Optional

- Main exposure with cooled bed





TECHNICAL DATA

36/47	42/60	52/80	MODEL
920x1240 mm 36"x48"	1070x1530 mm 42"x60"	1320x2030 mm 52"x80"	Max. Plate Dimensions
186x162x109	220x190x123	315x190x120	Dimension WxDxH cm
650	800	900	Weight kg
400V 3PH+N+GND 50/60Hz 230V 3PH+GND 50/60 Hz			Power Supply
12	13,5	15	Power kW
21x80W 10R L.1500 mm	33x60W 10R L.1200 mm	42x80W 10R L.1500 mm	Exposure UVA Lamps
17x80W 10R L.1500 mm	28x60W 10R L.1200 mm	36x80W 10R L.1500 mm	Post-Exposure UVA Lamps
16x60/95W L.1500 mm	27x36W L.1200 mm	35x60/95W L.1500 mm	Exposure UVC Lamps

LETTERPRESS

COMBINATION PROCESSORS

POLYMER WATER



MAIN FEATURES

Combination processor for water washable photopolymer plates.

- Independent processing sections
- Compatible with analogue and digital plates
- Washout of the whole plate surface through an orbital movement of the plate holder
- Easy manual brush segment setting
- Main exposure section equipped with LEDs indicating the status of each lamp
- Intuitive user-friendly HMI touch screen controlling all the steps of the process
- Temperature control of the wash out solution and dryer
- Remote connection possibility

Optional

- Sticky plate



TECHNICAL DATA

A3	A2	A1	A1 PLUS	MODEL
370x520 mm 14"x20"	520x760 mm 20"x30"	710x890 mm 27"x35"	790x1030 mm 31"x40"	Max. Plate Dimensions
75x95x128	108x100x128	145x115x128	145x125x128	Dimension WxDxH cm
200	290	520	540	Weight kg
400V 50/60Hz 3PH+N+GND 230V 50/60Hz 3PH+GND 230V 50/60Hz 1PH+N+GND		400V 50/60Hz 3PH+N+GND 230V 50/60Hz 3PH+GND		Power Supply
4	7,2	9,5	10	Power kW
28	35	79	82	Tank Capacity (l)
9x40W 09 L. 590mm	12x40W 09 L. 900 mm	15x40W 09 L. 1200 mm	17x40W 09 L. 1200mm	Exposure UVA Lamps

THE IMAGES IN THIS DOCUMENT ARE PROVIDED FOR ILLUSTRATIVE PURPOSES.
WE RESERVE THE RIGHT TO MAKE CHANGES AND IMPROVEMENTS TO ANY PRODUCT DESCRIBED HEREIN WITHOUT NOTICE.

WWW.AGIGRAPHICS.COM

IN-LINE PROCESSORS

VISIO WATER



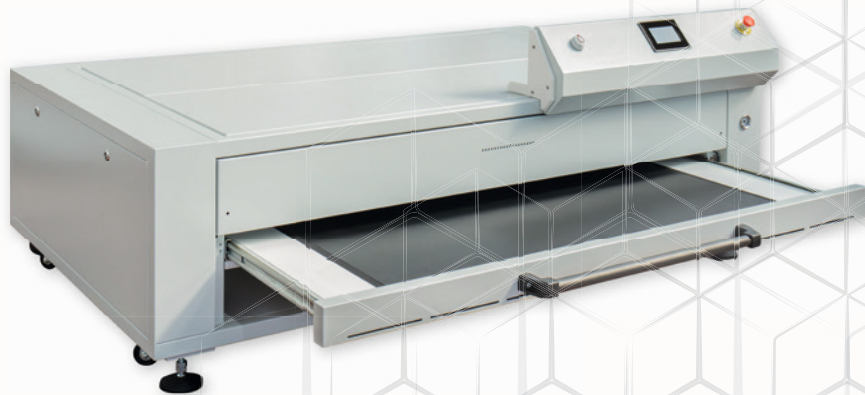
MAIN FEATURES

Automatic In-line processor for water washable photopolymer plates

- Intuitive user-friendly HMI touch screen controlling all the steps of the process
- Sections of the Visio in-line processor:
 - Black mask removal section for digital plates
 - Wash out section
 - Rinsing with fresh water
 - Pre-dryer
 - Dryer
 - Post exposure
- Wash out carried out by two brushes with orbital movement
- Final cleaning through a flat brush
- Air-knife removing excessive water
- Automatic platemaking process, with the possibility to process the plates in sequence
- Remote connection possibility
- Compressed air and water supply required

Optional

- Main exposure unit (designed to fit under the drying tunnel or table top)



TECHNICAL DATA

	520	760	920	MODEL
	520 x 762 cm 20"x30"	780x1100 cm 29"x43"	920x1200 cm 36"x47"	Max. Plate Dimensions
with tunnel	129x485x114	150x392x114	163x392x114	Dimension WxDxH cm
with tunnel	500	640	900	Weight kg
	400V 3PH+N+GND 50/60Hz 230V 3PH+GND 50/60Hz			Power Supply
	11,5	13	17	Power kW
	40	50	58	Tank Capacity (l)
	1000	1200	1500	Air Consumption (l/min)
	6	6	6	Pressure (bar)
	4x40W 09 L.900 mm	4x40W 09 L.1200 mm	4x40W 09 L.1200 mm	Post-Exposure UVA Lamps

THE IMAGES IN THIS DOCUMENT ARE PROVIDED FOR ILLUSTRATIVE PURPOSES.
WE RESERVE THE RIGHT TO MAKE CHANGES AND IMPROVEMENTS TO ANY PRODUCT DESCRIBED HEREIN WITHOUT NOTICE.

WWW.AGIGRAPHICS.COM

EXPOSURE UNITS

TABLE TOP



MAIN FEATURES

- Intuitive user-friendly HMI touch screen controlling all the steps of the process
- Main exposure equipped with light integrator and airflow system for lamps cooling
- LEDs indicating the status of each lamp
- Remote connection possibility



TECHNICAL DATA

A2	A1	36/47	MODEL
520x760 mm 20"x30"	760x1010 mm 30"x40"	920x1240 mm 36"x48"	Max. Plate Dimensions
110x103x37	137x130x44	181x150x55	Dimension WxDxH cm
85	140	200	Weight kg
230V 50/60Hz 1PH+N+GND			Power Supply
1	1,5	2	Power kW
12x60W 10R L.900 mm	16x60W 10R L.1200 mm	21x80W 10R L.1500 mm	Exposure UVA Lamps

FLEXO WATER

COMBINATION PROCESSORS

POLYMER FLEXO-WATER



MAIN FEATURES

Combination processor for flexo water plates.

- Independent processing sections
- Compatible with analogue and digital plates
- Washout of the whole plate surface through an orbital movement of the plate holder
- Easy manual brush segment setting
- Main exposure and finishing sections equipped with LEDs indicating the status of each lamp
- Intuitive user-friendly HMI touch screen controlling all the steps of the process
- Temperature control of the wash out solution and dryer
- Fumes exhaust
- Remote connection possibility



Optional

- Sticky plate
- Filtration unit



TECHNICAL DATA

A3	A2	A1	A1 Plus	MODEL
370x520 mm 14"x20"	520x760 mm 20"x30"	710x890 mm 27"x35"	790x1030 mm 31x40"	Max. Plate Dimensions
75x105x128	108x110x128	145x115x128	145x125x128	Dimension WxDxH cm
200	290	520	540	Weight kg
400V 50/60HZ 3PH+N+GND 230V 50/60HZ 3PH+GND 230V 50/60HZ 1PH+N+GND		400V 50/60HZ 3PH+N+GND 230V 50/60HZ 3PH+GND		Power Supply
3,7	7,7	8,4	8,5	Power kW
28	35	79	82	Tank Capacity (l)
9x40W 10R L. 590 mm	12x60W 10R L. 900 mm	15x60W 10R L. 1200 mm	17x60W L. 1200 mm	Exposure UVA Lamps
-	-	14x60W 10R L.1 200 mm	14x60W 10R L. 1200 mm	Post-Exposure UVA Lamps
10x15W L. 437 mm	12x30W L. 900 mm	13x36W L. 1200 mm	13x36W L. 1200 mm	Exposure UVC Lamps

THE IMAGES IN THIS DOCUMENT ARE PROVIDED FOR ILLUSTRATIVE PURPOSES.
WE RESERVE THE RIGHT TO MAKE CHANGES AND IMPROVEMENTS TO ANY PRODUCT DESCRIBED HEREIN WITHOUT NOTICE.

WWW.AGIGRAPHICS.COM

IN-LINE PROCESSORS

FLW FLEXO-WATER



MAIN FEATURES

Automatic in-line processor for flexo water plates

- Intuitive user-friendly HMI touch screen controlling all the steps of the process
- Wash out section and pre-dryer suitable for analogue and digital plates (digital black mask removal section included)
- Wash out carried out by two brushes with orbital movement
- Final cleaning through a flat brush
- Air-knife removing excessive water
- Pre-drying system – “plate dry to touch” (in-line dryer as optional)
- Detergent dosing pump managed by the computer
- Automatic platemaking process, with the possibility to process the plates in sequence
- Remote connection possibility
- Compressed air and water supply required

Optional

- EDF unit
- Filtration system

TECHNICAL DATA

760	920	1100	MODEL
760x1100 mm 29"x43"	920x1200 mm 36"x47"	1070x1530 mm 42"x60"	Max. Plate Dimensions
150x392x114	163x392x114	168x495x125	Dimension WxDxH cm
485	730	1040	Weight kg
230V 50/60Hz 3PH+GND 400V 50/60Hz 3PH+N+GND			Power Supply
13	17	17	Power kW
50	58	75	Tank Capacity (l)
1200	1500	1800	Air Consumption (l/min)
	6		Pressure (bar)

ALL-IN-ONE PROCESSORS

COMBI 25/30 FLEXO-WATER



MAIN FEATURES

Combination “all in one” processor for flexo water plates

- Independent processing sections
- Compatible with analogue and digital plates
- Fastening section on a table with permanent sticky plate
- Washout of the whole plate surface through an orbital movement of the brush segment
- Independent movement of the table during the wash out cycle
- Automatic rinsing and pre-drying of the plate
- Main exposure and finishing sections equipped with LEDs indicating the status of each lamp
- Intuitive user-friendly HMI touch screen controlling all the steps of the process
- Temperature control of the wash out solution, dryer and main exposure bed
- Detergent dosing pump managed by the computer
- Filtration system
- Remote connection possibility
- Compressed air and water supply required



TECHNICAL DATA

25/30	MODEL
635x762 mm 25"x30"	Max. Plate Dimensions
128x212x146	Machine Dimension WxDxH cm
128x109x118	Recycle Dimension WxDxH cm
740	Machine Weight kg
200	Recycle Weight kg
400V 3PH+N+GND 50/60Hz 230V 3PH+GND 50/60Hz	Power Supply
11,5	Power kW
80	Tank Capacity (l)
23	Filter Capacity (l)
1800	Filtering Area (cm ²)
450	Air Consumption (l/min)
6	Pressure (bar)
13x60W 10R L. 1200 mm	Exposure UVA Lamps
12x60W 10R L. 900 mm	Post-Exposure UVA Lamps
11x30W L. 900 mm	Exposure UVC Lamps

THE IMAGES IN THIS DOCUMENT ARE PROVIDED FOR ILLUSTRATIVE PURPOSES.
WE RESERVE THE RIGHT TO MAKE CHANGES AND IMPROVEMENTS TO ANY PRODUCT DESCRIBED HEREIN WITHOUT NOTICE.

WWW.AGIGRAPHICS.COM

COMBINATION PROCESSORS

POLYMER 25/30 FLEXO-WATER



MAIN FEATURES

Combination processor for flexo water plates

- Independent processing sections
- Compatible with analogue and digital plates
- Fastening section on a table with permanent sticky plate
- Washout of the whole plate surface through an orbital movement of the brush segment
- Independent movement of the table during the wash out cycle
- Main exposure and finishing sections equipped with LEDs indicating the status of each lamp
- Intuitive user-friendly HMI touch screen controlling all the steps of the process
- Temperature control of the wash out solution and dryer
- Filtration system
- Remote connection possibility
- Compressed air and water supply required



AGI
Attrezzature Grafiche Italia

WWW.AGIGRAPHICS.COM

TECHNICAL DATA

25/30	MODEL
635x762 mm 25"x30"	Max. Plate Dimensions
129x120x124	Machine Dimension WxDxH cm
112x75x110	Recycle Dimension WxDxH cm
470	Machine Weight kg
180	Recycle Weight kg
400V 50/60Hz 3PH+N+GND 230V 50/60Hz 3PH+GND	Power Supply
10	Power kW
95	Tank Capacity (l)
23	Filter Capacity (l)
1800	Filtering Area (cm ²)
50	Air Consumption (l/min)
6	Pressure (bar)
13x60W 10R L. 1200 mm	Exposure UVA Lamps
11x30W L.900 mm	Exposure UVC Lamps
12x60W 10R L. 900 mm	Post-Exposure UVA Lamps

THE IMAGES IN THIS DOCUMENT ARE PROVIDED FOR ILLUSTRATIVE PURPOSES.
WE RESERVE THE RIGHT TO MAKE CHANGES AND IMPROVEMENTS TO ANY PRODUCT DESCRIBED HEREIN WITHOUT NOTICE.

WWW.AGIGRAPHICS.COM

FILTRATION SYSTEMS

BAG FILTER STAINLESS STEEL



MAIN FEATURES

- Filtration unit for flexo water plate processors
- Wash out solution filtration through a filter bag, supplied in different materials and different filtration capacities
- Possibility to control the working pressure through two analogue manometers
- Manual discharge valve

TECHNICAL DATA

70x60x110

Dimension WxDxH

30

Weight kg

23

Filter Capacity (l)

1800

Filtering Area cm²

FILTRATION SYSTEMS

BAG FILTER STAINLESS STEEL



MAIN FEATURES

- Filtration unit for flexo water plate processors
- Wash out solution filtration through a filter bag, supplied in different materials and different filtration capacities
- Process pressure controlled by a precise digital pressure sensor
- Wash out solution tank with level sensors and overflow, automatic management of the wash out process, including charging and discharging
- Automatic control of the wash out solution temperature

TECHNICAL DATA

112x75x110

Dimension WxDxH

180

Weight kg

95

Tank Capacity (l)

23

Filter Capacity (l)

1800

Filtering Area cm²

WASHING SYSTEM

CLEANING SYSTEMS

CLEANING



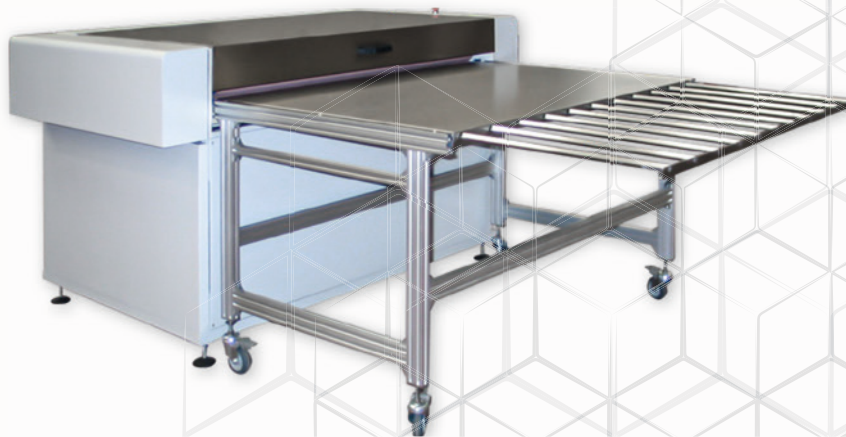
MAIN FEATURES

- Process consisting of cleaning, rinsing and drying
- Plate dragged into the unit by the rolls
- Speed of the rolls, cleaning brushes speed and cleaning agent temperature managed by the computer
- Alternative and floating movement of the two cleaning brushes
- Automatic charging / discharging of the cleaning agent, Cleaning 45 model excluded
- Water supply necessary (Excluded Cleaning 45 or models equipped with the water filtration unit)



Optional

- Water filtration unit - excludes the necessity of water supply
- Pneumatic hydraulic system
- Customized in-let and out-let tables
- Customized feeding and exit belts
- Sticky plate





TECHNICAL DATA

45	66	86	96	120	140	180	MODEL
450 mm 17"	650 mm 25"	820 mm 32"	920 mm 36"	1150 mm 45"	1380 mm 54"	1780 mm 70"	Max. Plate Dimensions
140 mm 5"				220 mm 8"			Min. Length Plate
104x120 h 115	114x175 h 115	133x175 h 115	143x175 h 115	168x175 h 115	192x289 h 115	233x289 h 115	Dimension WxDxH
150	190	200	240	270	540	640	Weight kg
		230V 50/60Hz 1PH+N+GND			230V/400V 50/60Hz 3PH-GND		Power Supply
2,5	2,5	2,5	3,5	3,5	5	8	Power kW
17		35				85	Solvet Tank Capacity (l)
17		39 OPTIONAL					Water Tank Capacity (l)



CLEANING SYSTEMS

CLEANING 4.0

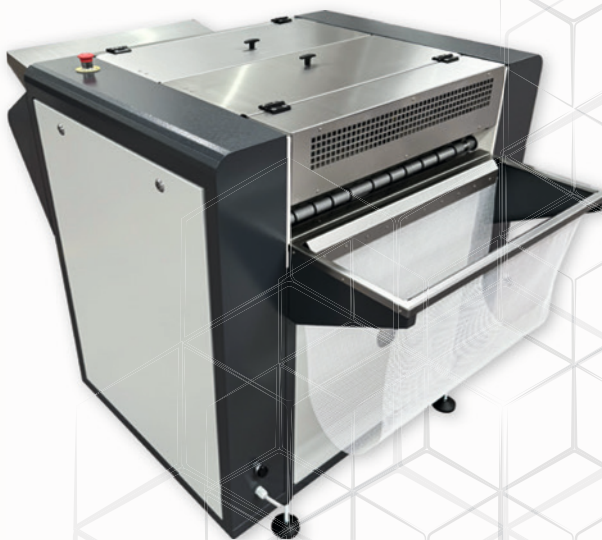


MAIN FEATURES

- Intuitive user-friendly HMI touch screen controlling all the steps of the process
- Process consisting of cleaning, rinsing and drying
- Plate dragged into the unit by the rolls
- Speed of the rolls, cleaning brushes speed and cleaning agent temperature managed by the computer
- Alternative and floating movement of the two cleaning brushes
- Automatic charging / discharging of the cleaning agent, Cleaning 45 model excluded
- Water supply necessary (Excluded Cleaning 45 or models equipped with the water filtration unit)

Optional

- Water filtration unit - excludes the necessity of water supply
- Pneumatic hydraulic system
- Customized in-let and out-let tables
- Customized feeding and exit belts
- Sticky plate





TECHNICAL DATA

45	66	86	96	120	140	180	MODEL
450 mm 17"	650 mm 25"	820 mm 32"	920 mm 36"	1150 mm 45"	1380 mm 54"	1780 mm 70"	Max. Plate Dimensions
140 mm 5"				220 mm 8"			Min. Length Plate
104x120 h 115	114x175 h 115	133x175 h 115	143x175 h 115	168x175 h 115	192x289 h 115	233x289 h 115	Dimension WxDxH
150	190	200	240	270	540	640	Weight kg
		230V 50/60Hz 1PH+N+GND			230V/400V 50/60Hz 3PH-GND		Power Supply
2,5	2,5	2,5	3,5	3,5	5	8	Power kW
17			35			85	Solvet Tank Capacity (l)
17			39 OPTIONAL				Water Tank Capacity (l)

THE IMAGES IN THIS DOCUMENT ARE PROVIDED FOR ILLUSTRATIVE PURPOSES.
WE RESERVE THE RIGHT TO MAKE CHANGES AND IMPROVEMENTS TO ANY PRODUCT DESCRIBED HEREIN WITHOUT NOTICE.

WWW.AGIGRAPHICS.COM

CLEANING SYSTEMS

SLEEVE CLEANER DIRECT LASER ENGRAVING



MAIN FEATURES

Automatic system designed to clean the sleeves after direct laser engraving

- Intuitive user-friendly HMI touch screen controlling all the steps of the process
- Cleaning carried out through a cylindrical brush automatically adapting itself to different sleeve diameters
- Rinsing with high pressure water
- Drying through compressed air
- Programmable settings of the different process phases
- Cleaning agent charge and discharge through a pump
- Filtration of the cleaning agent
- Removable cleaning agent tank for easy maintenance and cleaning
- Compressed air and water supply required

Optional

- External kit to reuse the rinsing water at closed circuit
- Sleeve adaptors

TECHNICAL DATA

300	MODEL
70 mm 2.8"	Min. Sleeve Diameter
350 mm 13.5"	Max. Sleeve Diameter
3000 mm	Max. Sleeve Length
390x101x120	Dimension WxDxH
700	Weight kg
230V 50/60Hz 1PH+N+GND	Power Supply
4	Power kW
60	Tank Capacity (l)

CLEANING SYSTEMS

SLEEVE CLEANER



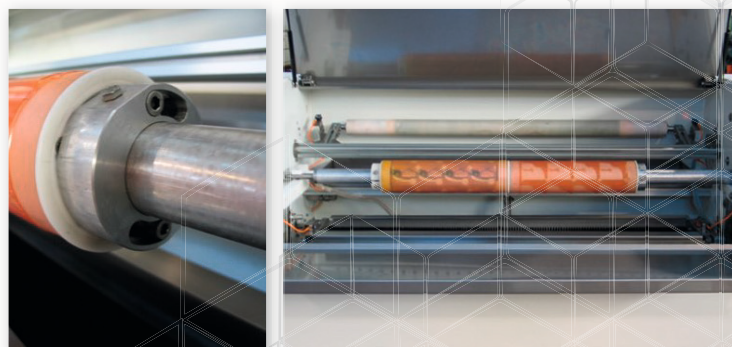
MAIN FEATURES

Automatic system designed to clean the sleeves after printing

- Intuitive user-friendly HMI touch screen controlling all the steps of the process
- Cleaning carried out through a set of 3 flat brushes with alternative movement, automatically adapting to different sleeve diameters
- Processing steps: Cleaning with cleaning agent and drying with sponge roll
- Programmable settings of the different processing steps
- Cleaning agent temperature control
- Cleaning agent charge and discharge through a pump
- Filtration of the cleaning agent
- Stainless steel cleaning agent tank for easy maintenance and cleaning
- Remote connection possibility
- Compressed air and water supply required

Optional

- Sleeve adaptors
- Possibility to clean more sleeves at the same time (with identical external diameter)
- Loading and unloading of the photopolymer sleeves on the adaptors through compressed air



TECHNICAL DATA

120	150	180	MODEL
	90 mm 3.5"		Min. Sleeve Diameter
	320 mm 12.5"		Max. Sleeve Diameter
1200 mm 47"	1500 mm 59"	1800 mm 71"	Max. Sleeve Length
205x89x140	245x89x140	265x89x140	Dimension WxDxH
300	350	400	Weight kg
230V 50/60Hz 3PH+GND 400V 50/60Hz 3PH+N+GND			Power Supply
11,5	13	17	Power kW
35	35	35	Tank Capacity (l)



THE IMAGES IN THIS DOCUMENT ARE PROVIDED FOR ILLUSTRATIVE PURPOSES.
WE RESERVE THE RIGHT TO MAKE CHANGES AND IMPROVEMENTS TO ANY PRODUCT DESCRIBED HEREIN WITHOUT NOTICE.

WWW.AGIGRAPHICS.COM

EXPOSERS

EXPOSURE UNITS

EDF LETTERPRESS



MAIN FEATURES

- Combined exposure and dryer
- Intuitive user-friendly HMI touch screen controlling all the steps of the process
- Main exposure equipped with light integrator and airflow system for lamps cooling
- Main exposure equipped with LEDs indicating the status of each lamp
- Drying section consisting of 4 drying drawers with independent timers
- Remote connection possibility

Optional

- Main exposure with cooled bed
- Separate UVA post exposure section

TECHNICAL DATA

36/47

MODEL

920x1240 mm
36"x48"

Max. Plate Dimensions

186x162x109

Dimension WxDxH cm

650

Weight kg

400V 3PH+N+GND 50/60Hz
230V 3PH+GND 50/60 Hz

Power Supply

10

Power kW

21x80W 10R L.1500 mm

Exposure UVA Lamps

EXPOSURE UNITS

EDF FLEXO-SOLVENT



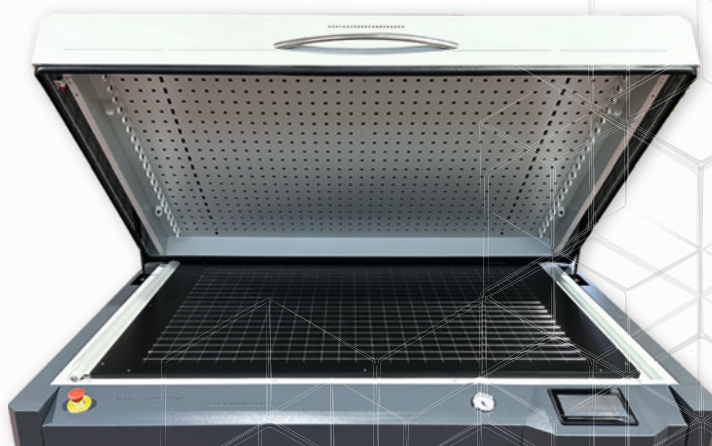
MAIN FEATURES

Combined exposure, dryer and light finishing unit

- Intuitive user-friendly HMI touch screen controlling all the steps of the process
- Main exposure equipped with light integrator and airflow system for lamps cooling
- Main exposure and finishing sections equipped with LEDs indicating the status of each lamp
- Drying section consisting of 4 drying drawers with independent timers
- Light finishing section with UVA and UVC lamps
- Dedicated exhaust system
- Remote connection possibility

Optional

- Main exposure with cooled bed





TECHNICAL DATA

36/47	42/60	52/80	MODEL
920x1240 mm 36"x48"	1070x1530 mm 42"x60"	1320x2030 mm 52"x80"	Max. Plate Dimensions
186x162x109	220x190x123	315x190x120	Dimension WxDxH cm
650	800	900	Weight kg
400V 3PH+N+GND 50/60Hz 230V 3PH+GND 50/60 Hz			Power Supply
12	13,5	15	Power kW
21x80W 10R L.1500 mm	33x60W 10R L.1200 mm	42x80W 10R L.1500 mm	Exposure UVA Lamps
17x80W 10R L.1500 mm	28x60W 10R L.1200 mm	36x80W 10R L.1500 mm	Post-Exposure UVA Lamps
16x60/95W L.1500 mm	27x36W L.1200 mm	35x60/95W L.1500 mm	Exposure UVC Lamps

EXPOSURE UNITS

EDF FLEXO-WATER



MAIN FEATURES

- Combined exposure, dryer and light finishing unit
- Intuitive user-friendly HMI touch screen controlling all the steps of the process
- Main exposure equipped with light integrator and airflow system for lamps cooling
- Main exposure and finishing sections equipped with LEDs indicating the status of each lamp
- Drying section consisting of 4 drying drawers with independent timers
- Light finishing section with UVA and UVC lamps
- Dedicated exhaust system
- Remote connection possibility

Optional

- Main exposure with cooled bed





TECHNICAL DATA

36/47	42/60	52/80	MODEL
920x1240 mm 36"x48"	1070x1530 mm 42"x60"	1320 x 2030 mm 52"x80"	Max. Plate Dimensions
186x162x109	220x190x123	315x190x120	Dimension WxDxH cm
650	800	900	Weight kg
230V 50/60Hz 3PH+GND 400V 50/60Hz 3PH+N+GND			Power Supply
12	13,5	15	Power kW
21x80W 10R L.1500 mm	33x60W 10R L.1200 mm	42x80W 10R L.1500 mm	Exposure UVA Lamps
17x80W 10R L.1500 mm	28x60W 10R L.1200 mm	36x80W 10R L.1500 mm	Post-Exposure UVA Lamps
16x60/95W L.1500 mm	27x36W L.1200 mm	35x60/95W L.1500 mm	Exposure UVC Lamps

EXPOSURE UNITS

EDF LED

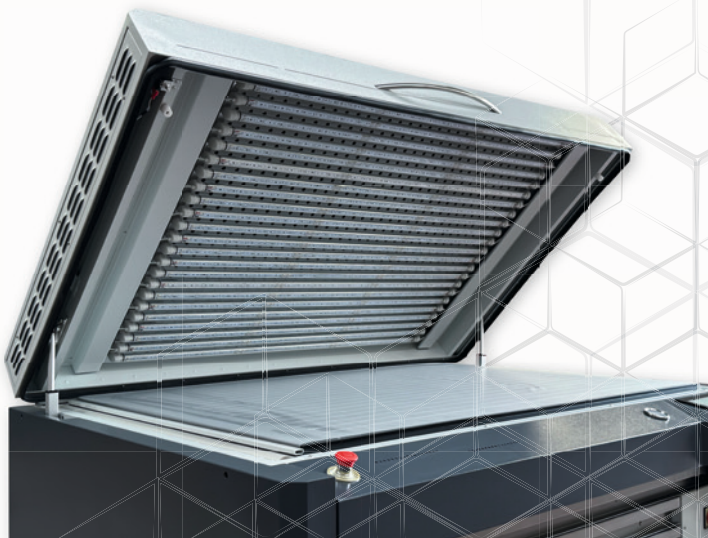
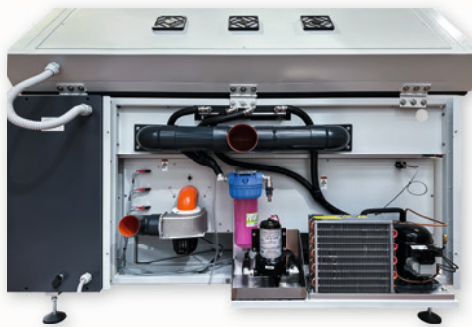


MAIN FEATURES

- Combined exposure, dryer and light finishing unit
- Intuitive user-friendly HMI touch screen controlling all the steps of the process
- Main exposure equipped with LED lamps and airflow system for lamps cooling
- Drying section consisting of 4 drying drawers with independent timers
- Light finishing section with UVA and UVC lamps with LEDs indicating the status of each lamp (flexo version)
- Dedicated exhaust system (flexo version)
- Remote connection possibility

Optional

- Main exposure with cooled bed



AGI
Attrezzature Grafiche Italia

WWW.AGIGRAPHICS.COM



TECHNICAL DATA

36/47

MODEL

920x1240 mm
36"x48"

Max Plate Dimension

186x162x109

Dimension WxDxA cm

650

Weight kg

400V 3PH+N+GND 50/60Hz
230V 3PH+GND 50/60 Hz

Power Supply

11,5

Power kW

23xLED 365 nm L.1300 mm

Exposure LED UVA Lamps

17x80W 10R L.1500 mm

Post-Exposure UVA Lamps

16x60/95W L.1500 mm

Exposure UVC Lamps

EXPOSURE UNITS

TABLE TOP



MAIN FEATURES

- Intuitive user-friendly HMI touch screen controlling all the steps of the process
- Main exposure equipped with light integrator and airflow system for lamps cooling
- LEDs indicating the status of each lamp
- Remote connection possibility



AGI
Attrezzature Grafiche Italia

WWW.AGIGRAPHICS.COM

TECHNICAL DATA

A2	A1	36/47	MODEL
520x760 mm 20"x30"	760x1010 mm 30"x40"	920x1240 mm 36"x48"	Max. Plate Dimensions
110x103x37	137x130x44	181x150x55	Dimension WxDxH cm
85	140	200	Weight kg
230V 50/60Hz 1PH+N+GND			Power Supply
1	1,5	2	Power kW
12x60W 10R L.900 mm	16x60W 10R L.1200 mm	21x80W 10R L.1500 mm	Exposure UVA Lamps

THE IMAGES IN THIS DOCUMENT ARE PROVIDED FOR ILLUSTRATIVE PURPOSES.
WE RESERVE THE RIGHT TO MAKE CHANGES AND IMPROVEMENTS TO ANY PRODUCT DESCRIBED HEREIN WITHOUT NOTICE.

WWW.AGIGRAPHICS.COM

LIGHT FINISHER

UVA - UVC



MAIN FEATURES

Light finishing unit with UVA and UVC lamps

- Intuitive user-friendly HMI touch screen controlling all the steps of the process
- LEDs indicating the status of each lamp
- Stainless steel drawer
- Fumes exhaust
- Remote connection possibility

TECHNICAL DATA

30/40	36/47	42/60	MODEL
760x1016 mm 30"x40"	930x1320 mm 36x48"	1070x1530 mm 42x60"	Max. Plate Dimensions
162x109x34	197x142x34	229x170x38	Dimension WxDxH cm
153	205	310	Weight kg
400V 50/60Hz 3PH+N+GND A1: 230V 50/60Hz 3PH+GND			Power Supply
1,6	2,4	3,3	Power kW
14x60W 10R L.1200	17x80W 10R L.1500 mm	28x60W 10R L.1200 mm	Post-Exposure UVA Lamps
13X36W L.1200	16x60/95W L.1500 mm	27x36W L.1200 mm	Exposure UVC Lamps



21020 MORNAGO (VA) - ITALY
via G. Mazzini, 57
Phone: +39 0331 993 656/7 • E-mail: info@agigraphics.com
www.agigraphics.com